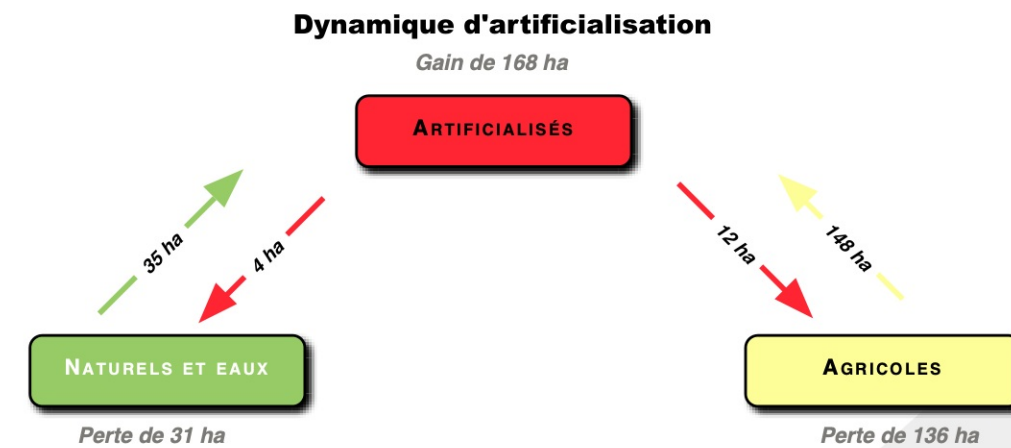
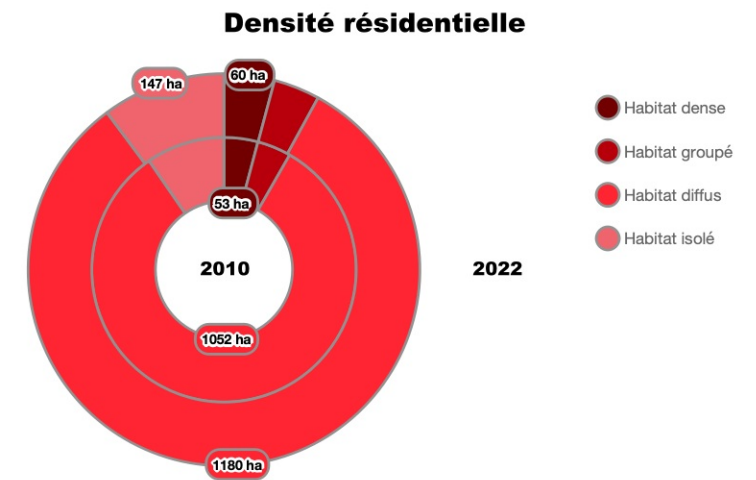
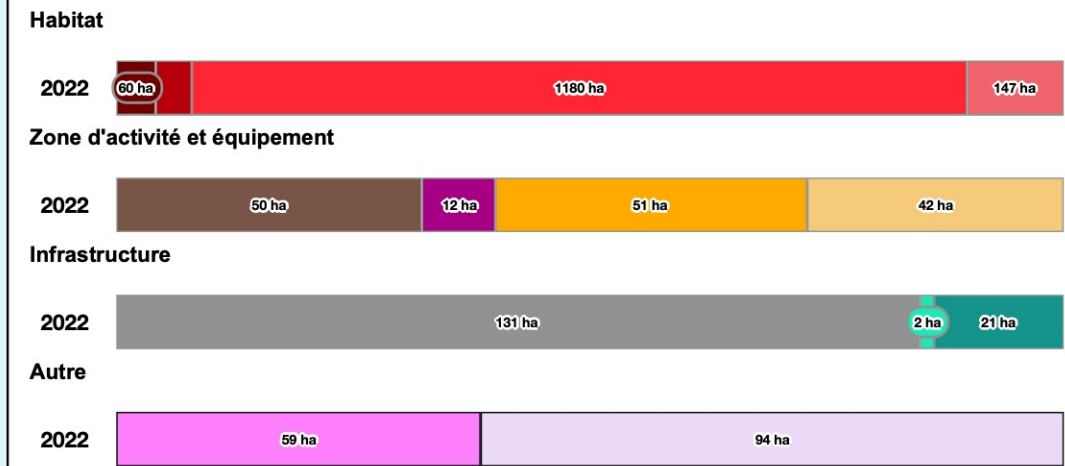
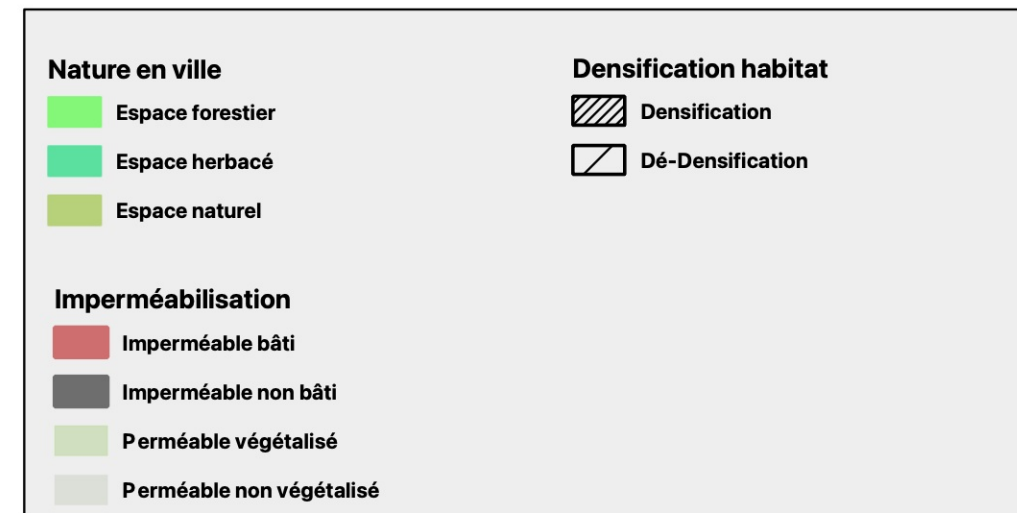
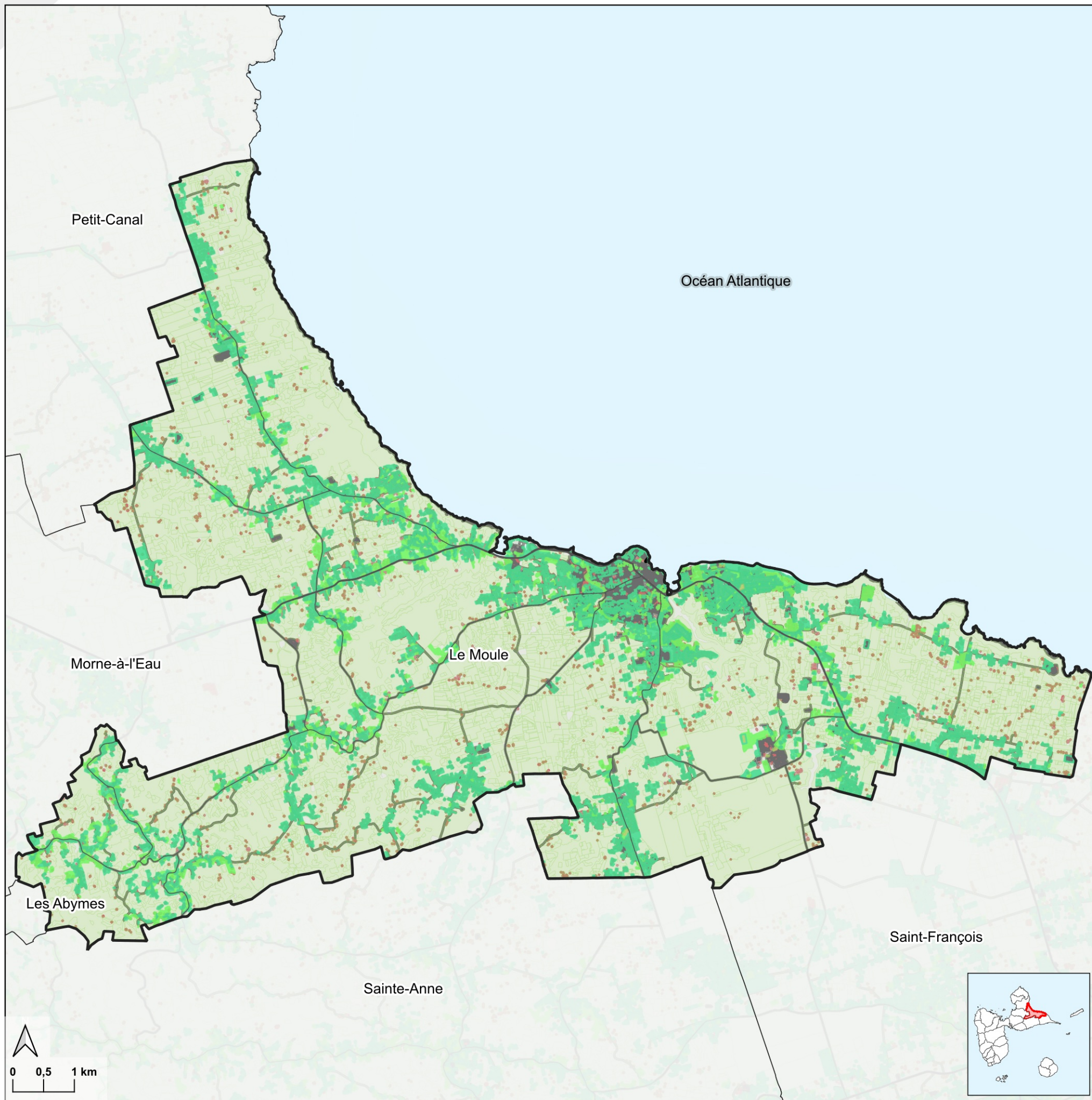
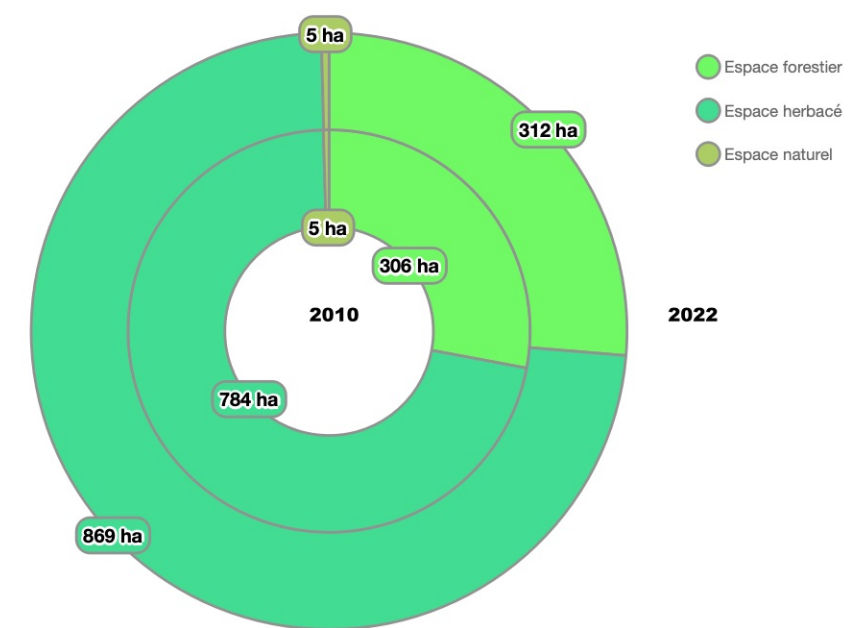


Répartition de l'artificialisation du sol en 2022 (en hectares)





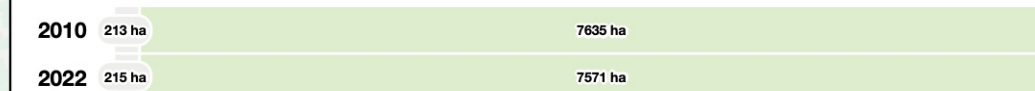
Nature en ville 2010 et 2022 (en hectares)



Imperméabilisation

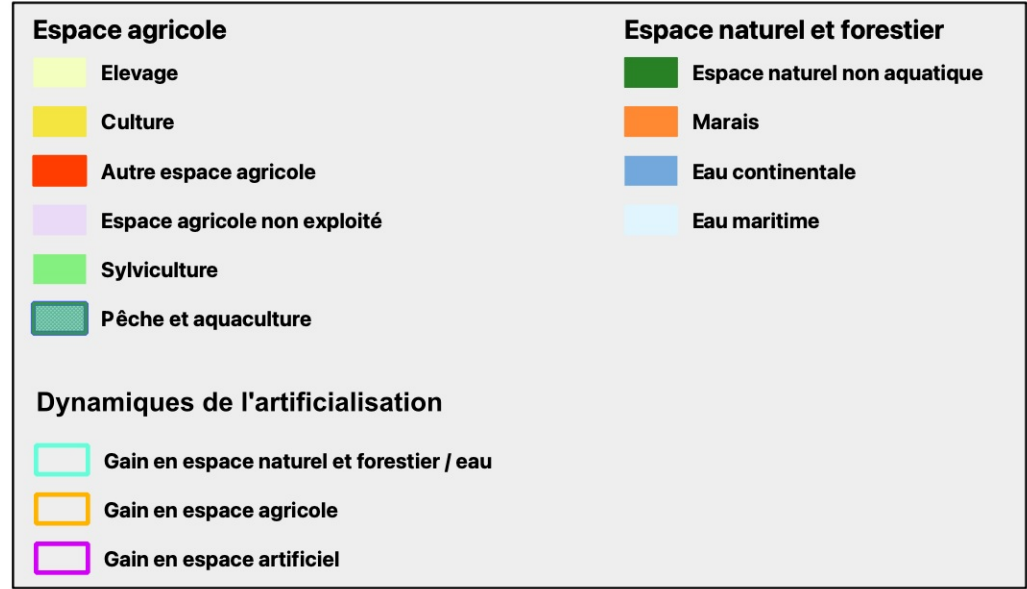
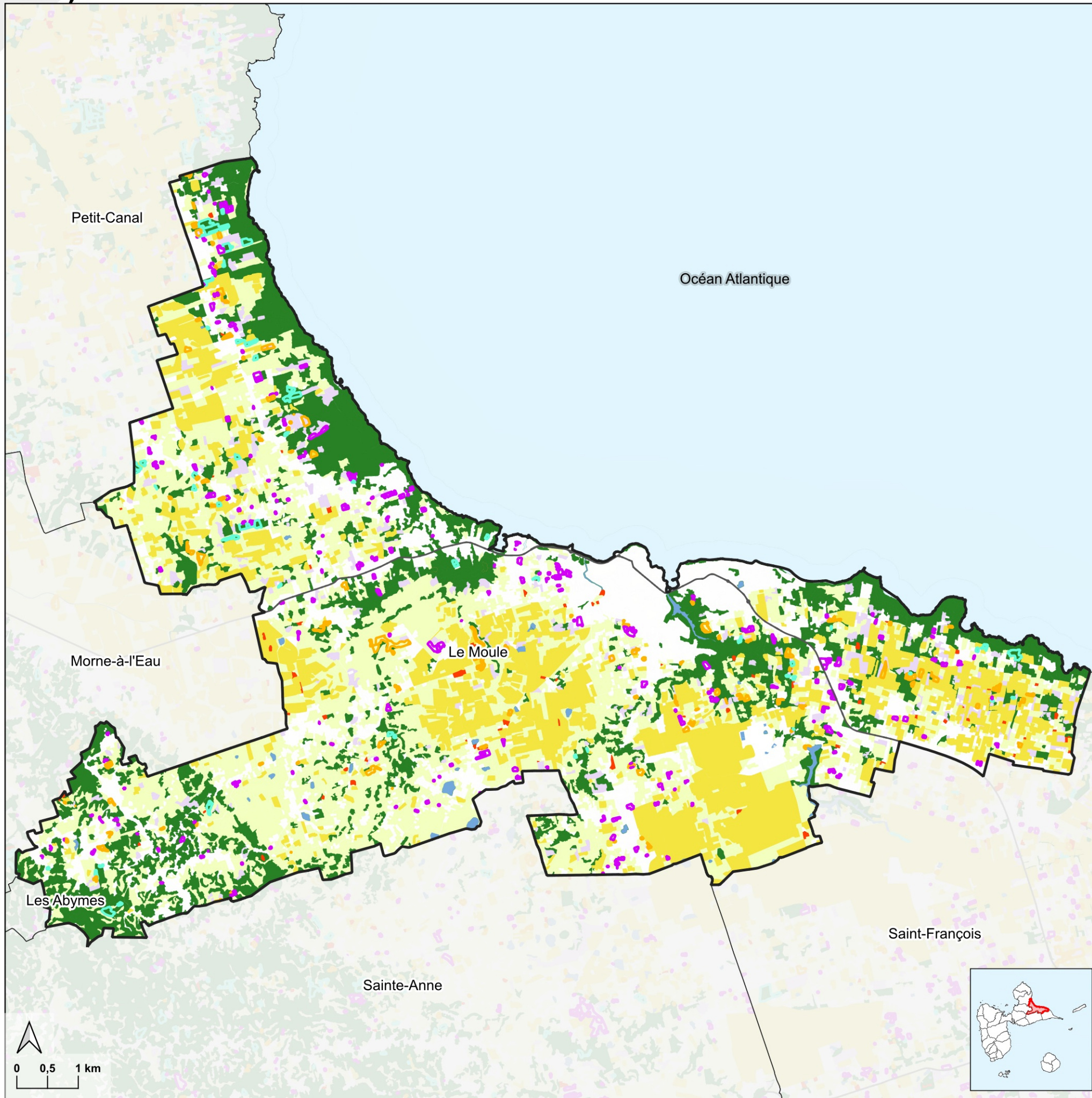


Perméabilisation

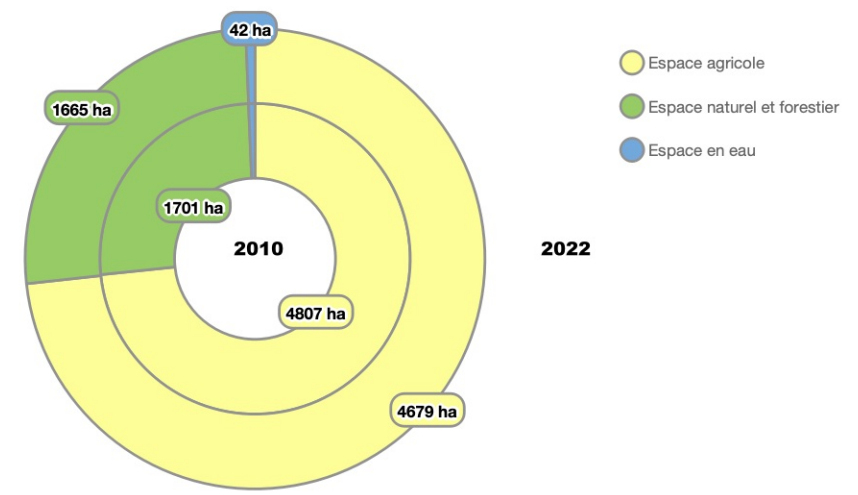


Espaces naturels, agricoles et forestiers en 2022 (composition et évolution avec 2010)

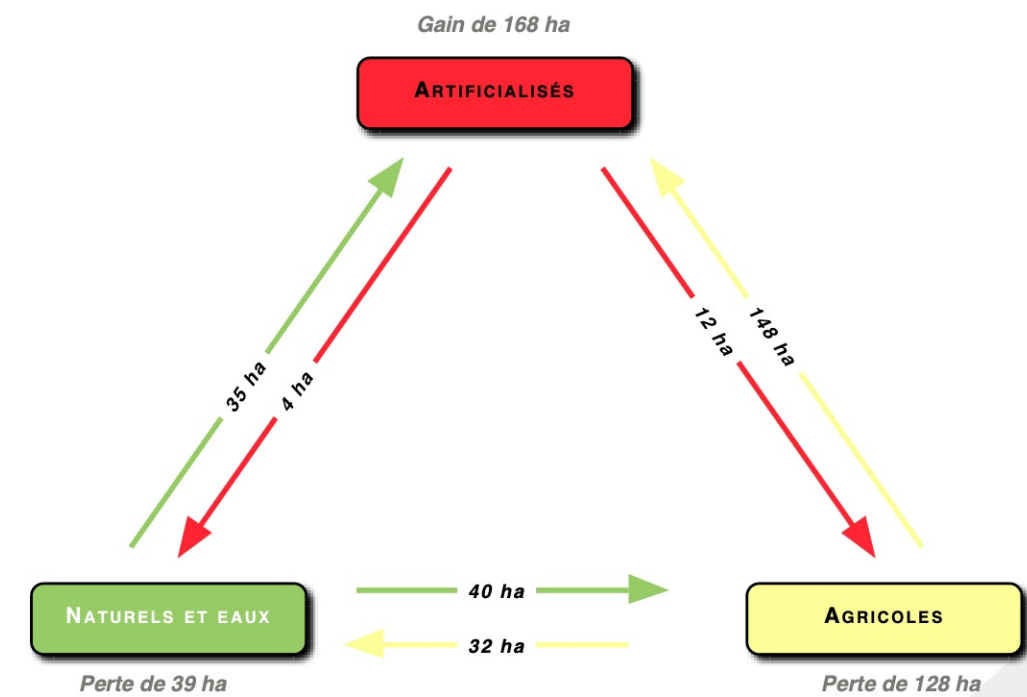
LE MOULE

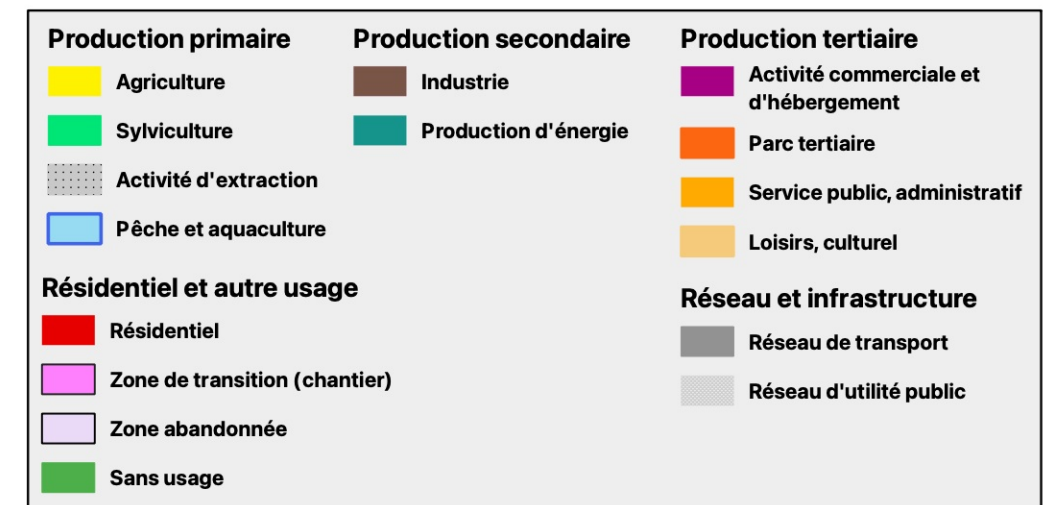
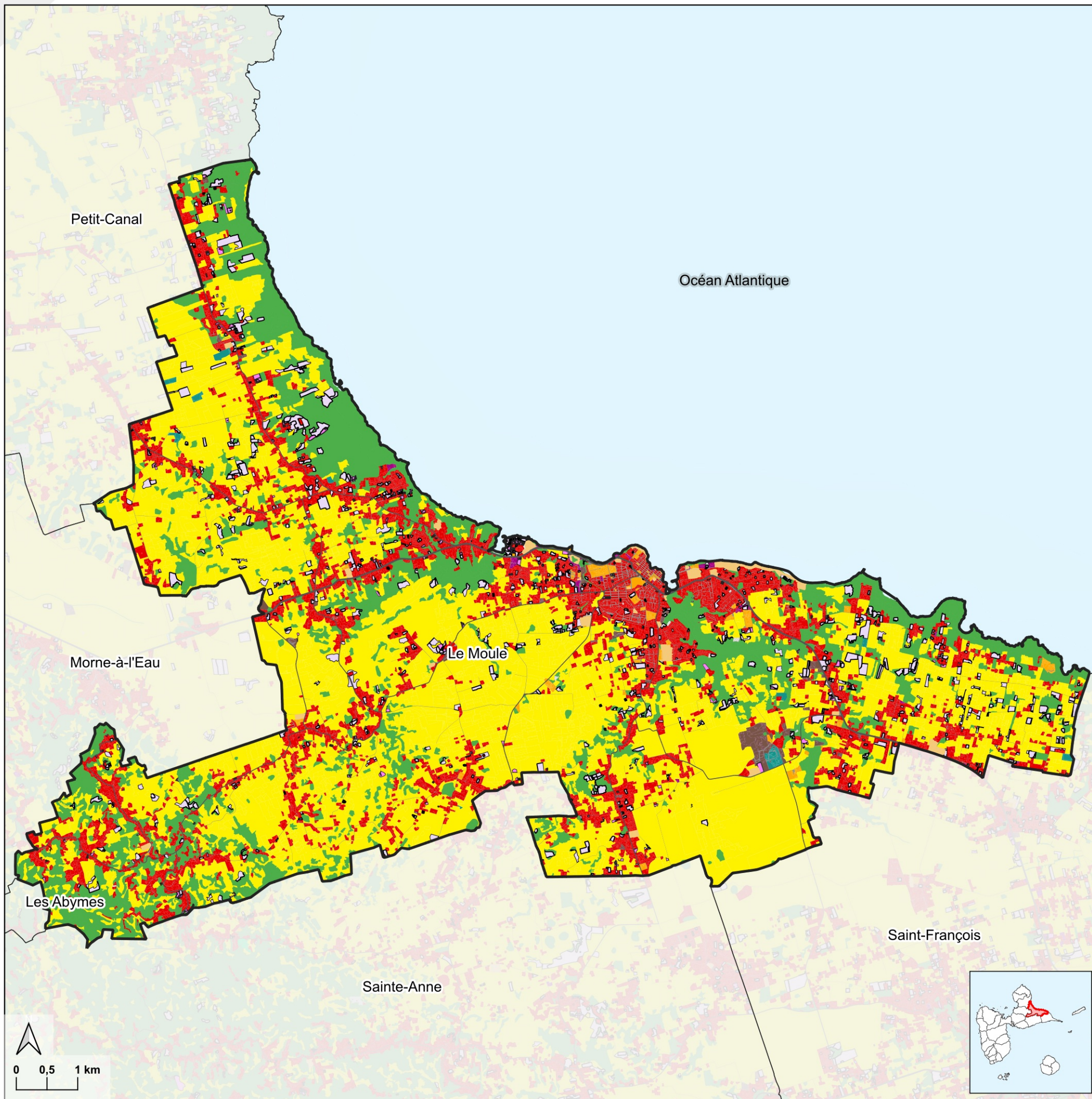


Composition et évolution des espaces naturels et en eau (2010 et 2022)

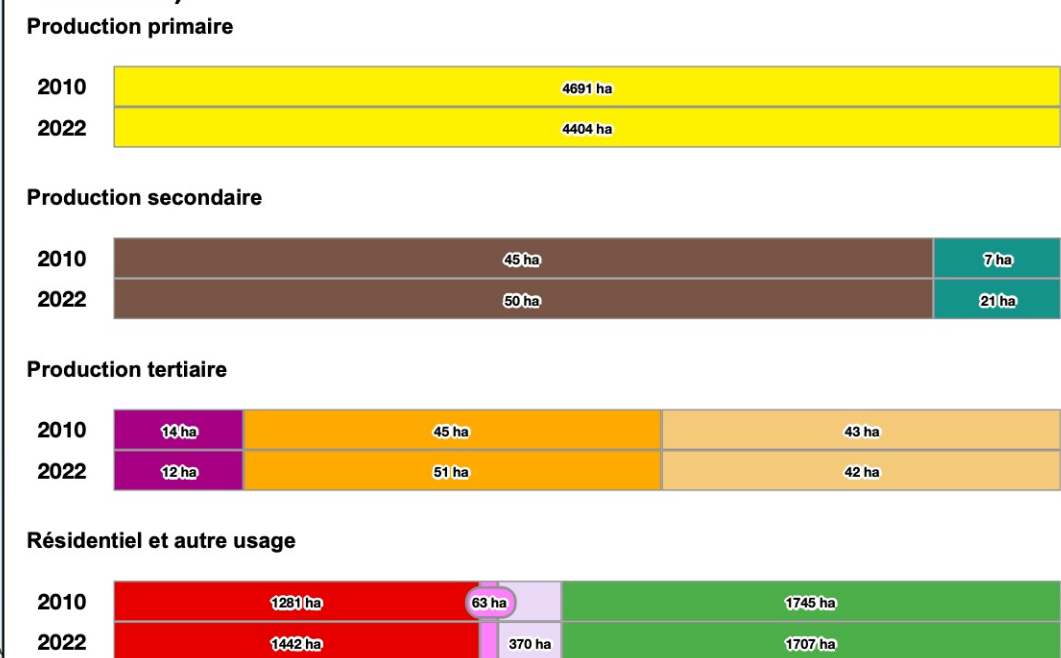


Dynamiques de changements

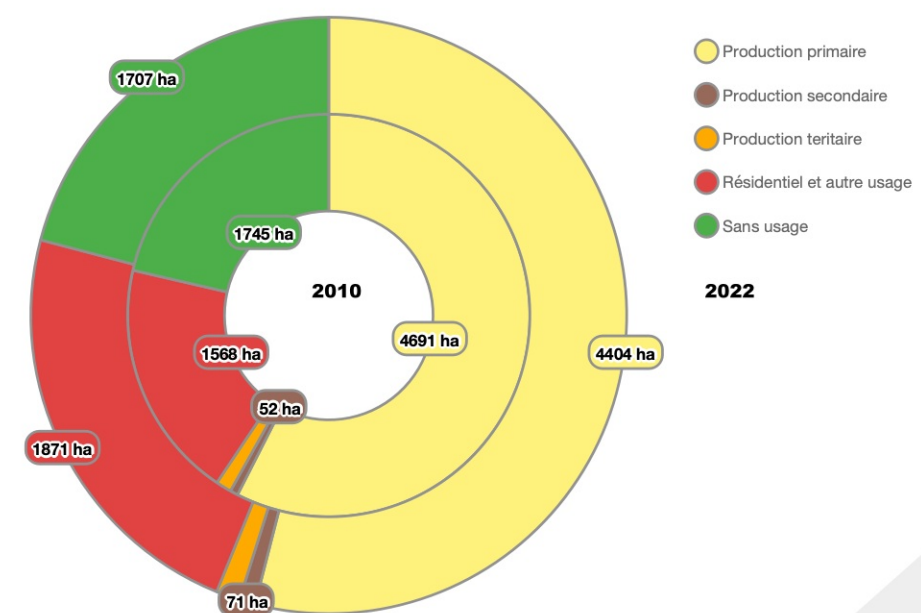




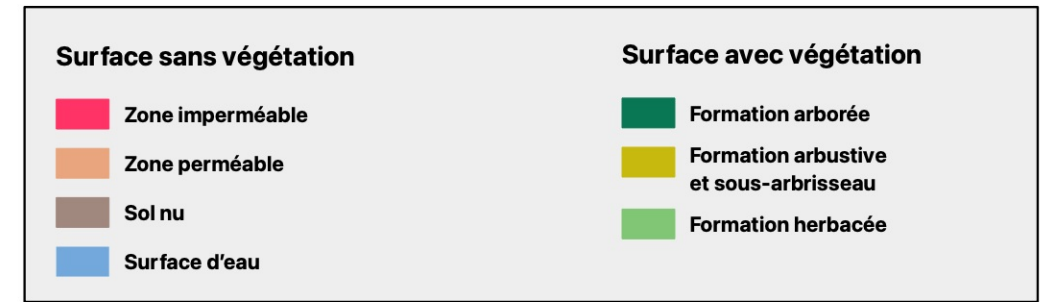
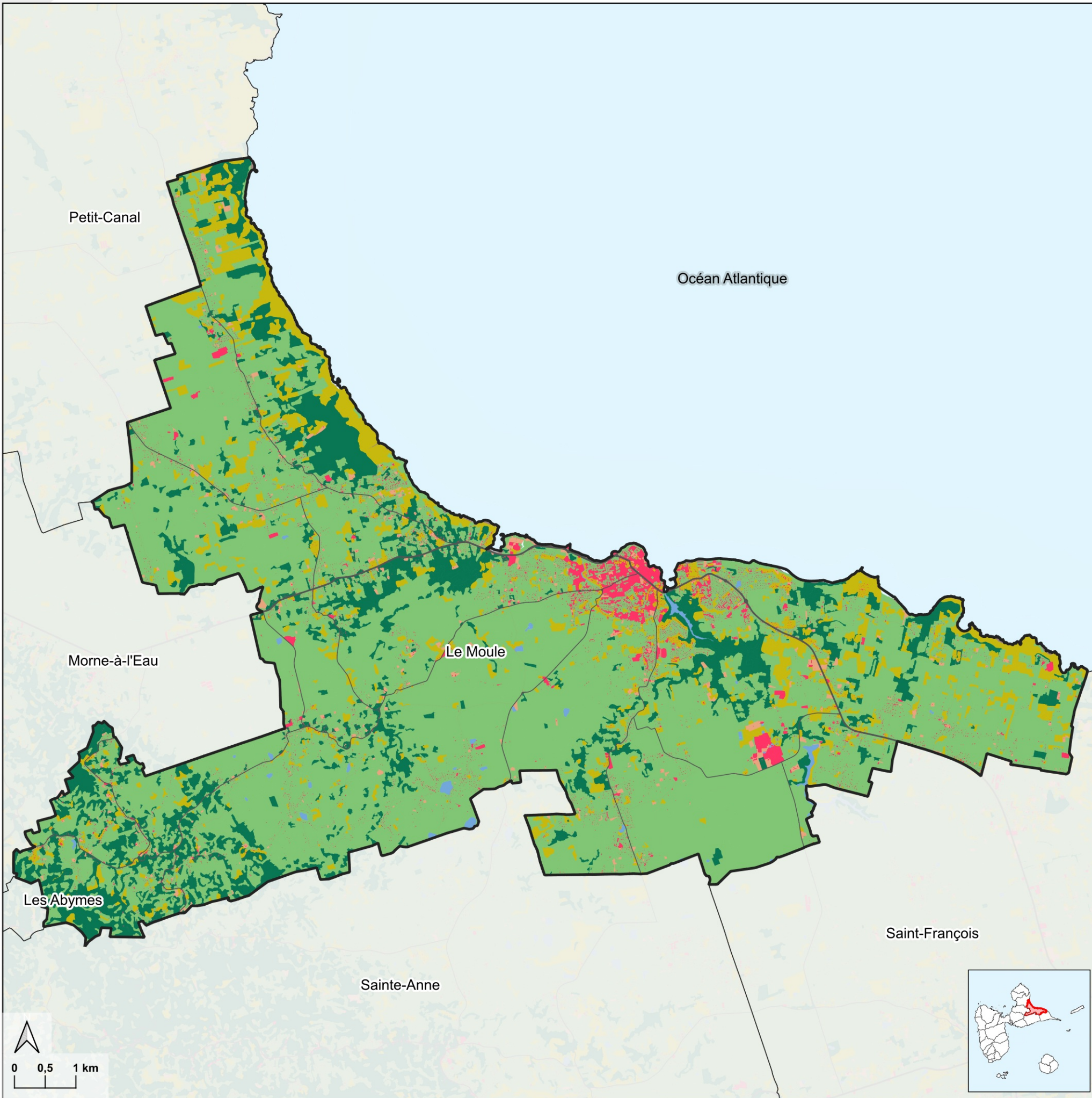
Evolution de l'usage du sol en 16 postes entre 2010 et 2022 (en hectares)



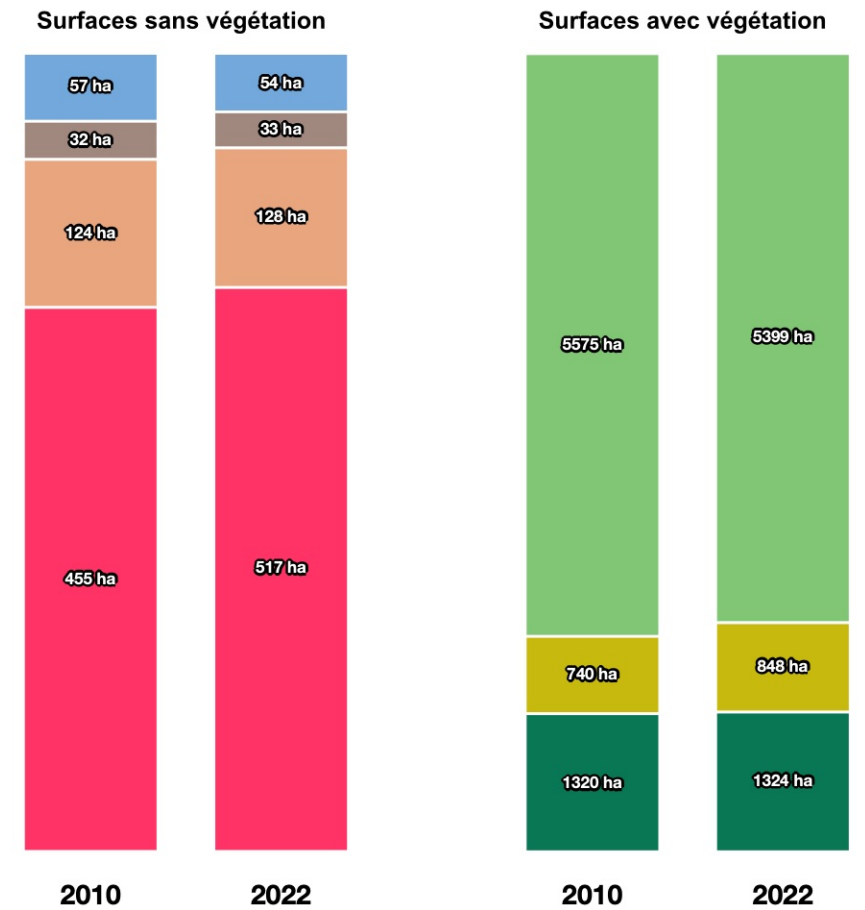
Evolution des surfaces entre 2010 et 2022 pour les 5 grands types d'espace



Couverture du sol en 2022 (composition et évolution avec 2010)



Evolution de l'usage du sol en 7 postes entre 2010 et 2022 (en hectares)



Evolution des surfaces sans végétation et avec végétation entre 2010 et 2022

